

Est8Update

Christmas Special 2011

MERRY CHRISTMAS FROM THE DIRECTORATE OF ESTATES & FACILITIES

Your Favourite Photos

Est8 Update welcomes and would like to encourage staff within Estates and Facilities to send in a few of your favorite photographs, taken by you, that we can feature in future editions. If you would like to feature a favorite photo, please send these to Emma Lloyd, Director's Office, 3rd floor, Beyer Building or email to Est8Update@manchester.ac.uk with your name and a short description/information about your photo.

Photo of Ashburne Hall taken by Norman Gillson, Events Co-Ordinator for the Fallowfield Campus and Warden of Ashburne Hall.



Message from the Director

Dear Colleague

With Christmas fast approaching it is my opportunity to thank you all for your contribution to the work of the University and the Directorate. It was nice to see so many of you at our recent 'Thank You' event and it is something that I hope we can repeat next year as a token of the Directorate's appreciation for all your efforts.

It has been a busy year and the cycle of University business has come and gone, with Estates and Facilities colleagues playing a big part in

the success of events such as Welcome Week, examinations and graduation, as well as helping with very successful projects throughout the year, and much more besides.

The University's 2020 Vision has just been published and, in the New Year, we will think about how we in Estates and Facilities can support the Vision. We will begin with a review of the Estates Strategy and then all units will be involved in business planning to ensure that everybody can play their part.

But for now, I wish you and your families a very happy and peaceful Christmas with my very best wishes for the New Year.

Diana Hampson
Director of Estates and Facilities



Christmas and New Year Closure Dates

The University is closed for the Christmas/New Year period on the following dates:

Friday 23 December	Christmas closure day
Monday 26 December	Christmas Bank Holiday
Tuesday 27 December	Christmas Bank Holiday
Wednesday 28 December	Christmas closure day
Thursday 29 December	Christmas closure day
Friday 30 December	Christmas closure day
Monday 2 January	New Year Bank Holiday

Have an Energy Conscious Christmas!

What you should - and should not - switch off over the Christmas closure period. As we approach the Christmas break we would like to wish everyone a very Energy Conscious Christmas.

In the run-up to the Christmas closure can we ask you to have a look around your office or facility and see if there are any electrical items that could be turned off for this closure period?

It would be preferable to turn items off at the plug socket - but do not stretch to reach these if they are hidden or difficult to access!

Please concentrate on:

PCs - monitors/printers/scanners/speakers/peripherals

Photocopiers

Shredders

Lights

Chargers - mobile phones/battery/PDAs

Water Coolers

Electric (point of use) boilers

Heaters/coolers

Kitchen equipment: dishwashers/microwaves/coffee makers/kettles

Laboratory equipment (ONLY BY APPROVED LABORATORY TECHNICIANS)

PLEASE DO NOT TURN OFF:

Fax machines

Fridges/freezers (unless empty)

Experiments

Servers

Safety/monitoring equipment

If you are not sure, please leave the equipment on!

Doing this will not only assist in reducing the amount of carbon the University produces as a result of its activities, it will also assist in reducing energy costs. If you have any queries about this please contact:

David Brown, Senior Mechanical and Energy Engineer on ext 54943 or david.a.brown@manchester.ac.uk

Lucy Millard, Environmental and Sustainability Officer on ext 55563 or lucy.millard@manchester.ac.uk

Damian Oatway, Assistant Mechanical (ext 52272) or Damian.Oatway@manchester.ac.uk



BBC

Children in Need

Thank You from Pudsey's Patisserie!

The staff at Pudsey's Patisserie would like to say a huge Thank You to all the people who made the bake sale on Friday 18 November a success, raising over £450 for Children in Need.

Particular thanks go to the bakers as the day wouldn't have been possible without you and special thanks go to Kenny Nolan who 'made' a Pudsey Cake which was raffled as we didn't want to cut into Pudsey! The lucky winner (of over 60 hopefuls) was Brent Wills who is pictured with his prize!

Pudsey's Patisserie has again closed its doors but will re-open for Children in Need 2012. We want to be bigger and even more successful next year so are currently recruiting bakers. If you are interested in volunteering at the Patisserie, please let Steph Marsh know.

Steph Marsh
Director's Office



Food On Campus Fund Raising



FoodOnCampus team in Rock Cafe

FoodOnCampus raised £1,165.20 for the charity. The money was raised by donating a percentage of the cake sales over the week and by having collection tins in all the outlets. Lots of staff members got into the spirit and dressed up for the event.

Katie Thorp
Marketing Officer



FoodOnCampus team in Library Lounge Cafe



NAME **Buxton SPA**
 BREWERY **Buxton Brewing Company**
 ABV **4.1%**
 VENUE **The Milson Rhodes (Didsbury)**

What a delight! Golden creamy pale ale with a whack of citra hops that lingers lovingly on the back of your palate. Fresh, citric and refreshing with a sweet floral aroma and thick luxurious head. Truly quaffastic.

Appearance	8/10
Aroma	7/10
Atmosphere	7/10
Flavour	9/10
Location	7/10
Service	8/10
Temperature	8/10
Value	9/10
Venue	8/10
Viscosity	7/10

78% Final rating
Of special magnificence.

The Christmas Angel

As they kicked the ball the atmosphere was tense as these spectators of soldiers looked through the barbed wire fence.

The trenches of no man's land shone out so bright as the Christmas snow fell reflecting these overwhelmed soldiers with what looked like flood lights.

This illuminating vision fell upon the battle fields of death as a Christmas angel of peace descended upon them amongst the icy weather with her lovely warm breath.

The angel spoke of no more fear upon this Christmas night "do not hide behind the high trenched walls" as the Christmas angel blew her whistle for them to play a peaceful game of football.

(For all those soldier's past and present who cannot be with their loved ones at Christmas).

Alice McDonnell (Procurement & Stores supervisor)
 Maintenance Services Unit



Christmas Recipes

Christmas Stuffing

Ingredients

- 500g/1lb 2oz fresh chestnuts or tinned
- 1 whole head celery, washed and chopped
- 1 small onion, peeled, finely chopped
- 25g/1oz butter
- 12 prunes, stones removed
- 1 tbsp chopped fresh parsley
- 1 free-range egg, beaten
- salt and freshly ground black pepper
- 1 turkey's liver, trimmed, rinsed, finely chopped
- 50g/2oz fresh breadcrumbs

Method

1. Make little slits in the chestnuts, then blanch or roast them to ease peeling. Simmer the chestnuts in unsalted water until completely tender (15-20 minutes).
2. Drain and leave to cool, then place in a basin and roughly break them up with a fork - you want them crumbled rather than puréed.
3. Sweat the onion and celery in the butter over a medium heat for a few minutes until softened, then add the prunes, chestnuts and parsley. Season with salt and pepper, mix well and cook for a further few minutes. Remove the pan from the heat.
4. When the mixture has cooled a little, mix in the breadcrumbs, liver and egg until all the ingredients are well combined. Pile the mixture into a suitably sized ovenproof dish. Bake for 30-35 minutes in a fairly hot oven (i.e. with the turkey at 180C/350F/Gas 4) until nicely browned and crispy on top.
5. Serve slices of the stuffing with the turkey.



Cranberry mousse with Pistachio

Ingredients

- 1 mini bottle of port (approximately 2 tbsp)
- 150g/5oz caster sugar
- 200g/7oz cranberries
- 100gm Shelled Pistachios
- 2 egg whites
- 5 tbsp Greek yogurt
- 25g/1oz icing sugar
- sprig fresh mint

Method

1. In a saucepan heat the port, caster sugar and cranberries. Cook for eight minutes. Remove from the heat and leave to cool.
2. In a large bowl whisk the egg whites until stiff. Add the icing sugar and whisk in. Fold in the Greek yogurt and the cold cranberry sauce.
3. Place into a glass and leave in the fridge to set for 10 minutes.
4. Garnish with Pistachios and a sprig of fresh mint and serve.

Martin Smith

Executive Head Chef, Food On Campus

GET SET FOR 2012!

Be inspired by the **Olympic Games** and get involved in **Sport and Fitness during 2012!**

FITNESS MANCHESTER

WORKOUT WITH OUR EXPERT FITNESS INSTRUCTORS



NEW! 6 MONTH MEMBERSHIPS!

AT THE ARMITAGE CENTRE, FALLOWFIELD MEMBERSHIPS START JANUARY 2012!

BUY YOUR 6 MONTH MEMBERSHIP ONLINE BEFORE SUNDAY 15TH JANUARY AND

GET £10 OFF!



COACHED SPORT

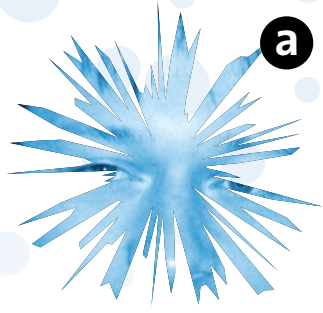
JOIN ONE OF OUR COACHED SESSIONS OR SPORT LADDERS



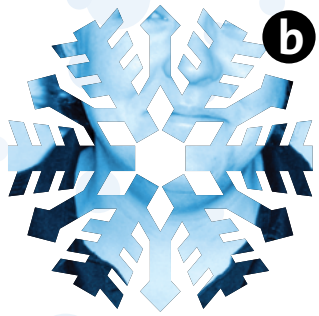
Scan the QR code with your smartphone to go straight to the website

You can book all classes, sessions and memberships on line from our website www.manchester.ac.uk/sport

Festive Fun



a



b



c



d



e



f



g



h



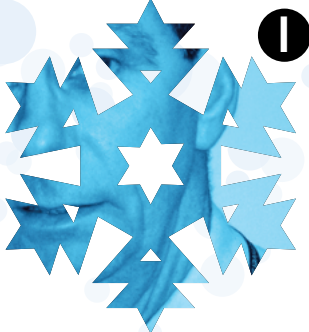
i



j



k



l

Christmas Quiz

After the opening of presents, visiting family and friends, having Christmas lunch and the essential afternoon snooze, why not partake in a Christmas quiz with your family and friends. Here are a few questions submitted by Brien Moss, Landscape Services, Environmental Services Unit (answers are upside down following the questions):

1. What new present did my true love give to me on the ninth day of Christmas?
2. Who recorded 'Step into Christmas' in 1973?
3. In which country did the tradition of sending Christmas cards originate?
4. Where can the world's biggest Christmas tree be seen every year?
5. What are the three categories of port, based on their colour?
6. Where is the world's largest exporter of Christmas trees?
7. In which country do they traditionally drink Glogg at Christmas?
8. Which US state has a city called Carol City?
9. What is the Cockney rhyming slang for 'eyes'?
10. On what date does Saint Nicholas' Day fall?
11. How many "las" are there in a line of 'Deck the Halls'?
12. Where was it always winter but never Christmas?
13. Who discovered Christmas Island in 1777?
14. What did Queen Elizabeth I decree should be eaten at Christmas?
15. Where did Richard Attenborough witness a miracle back in 1994?

Answers

1. Nine Pipes Piping
2. Elton John
3. England
4. Times Square, New York
5. Ruby/Lawny/White
6. Canada (Nova Scotia)
7. Denmark
8. Florida
9. Mince Pies
10. 6th December
11. Eight, plus one for: "Fa, la, la, la, la, la"
12. Antarctica
13. Nanna (The Lion, the Witch and the Wardrobe)
14. Captain James Cook
15. on 34th Street

Est8 Update Christmas Quiz: Guess Who?

For your chance to win a £20 voucher, correctly match these festively skewed Directorate staff faces to their name:

Lee Barlow, Professional Services Unit _____
 Peter Jegou, Security Services _____
 Vinny May, House Services _____
 Russell Moore, Security Services _____
 Andy Tipping, House Services _____
 Chris Winterbottom, House Services _____

Janette Barton, House Services _____
 Steph Marsh, Director's Office _____
 Jonathan Minshull, FoodOnCampus _____
 Dave Rose, Maintenance Services _____
 Dave Whelan, Maintenance Services _____
 Adam Woof, Hotel and Conference Services _____

Send your answers to Emma Lloyd, Director's Office, room 3.001, Beyer Building by Friday 6th January 2012.

Est8 Update Sudoku Quiz Winner

Congratulations to Tony Eyres, Environmental Services Unit who solved the Sudoku quiz and won a £20 gift voucher.



The Odd(er) Xmas Do

The last working day seems like the perfect time to celebrate and where better than a place that serves 'Odder Burgers'!!!

A mixture of staff from around the Directorate will be heading to Odder to reflect on the year's achievements, review the budget for the upcoming year, and decide how we can be more efficient... and the rest of the people there will be getting into the Christmas spirit, laughing, joking and probably moaning about how much their shoes are hurting their feet! Cameras will be at the ready to make sure that after the nice long break over Christmas, embarrassing moments won't just be forgotten!

Steph Marsh
 Director's Office

Est8 Update would love to hear about your Christmas parties and to see any photos, so send them to: est8update@manchester.ac.uk